

Stand Tunes

Back in Black

Measures 1-4 of 'Back in Black'. The music is in bass clef, 4/4 time, and B-flat major. It features a rhythmic pattern of eighth and sixteenth notes.

5

Measures 5-8 of 'Back in Black'. The music continues with the same rhythmic pattern as the previous section.

9

Measures 9-13 of 'Back in Black'. The music concludes with a final cadence.

14 Godzilla

Measures 14-19 of 'Godzilla'. The music is in bass clef, 4/4 time, and B-flat major. It features a rhythmic pattern of eighth and sixteenth notes.

20

Measures 20-25 of 'Godzilla'. The music continues with the same rhythmic pattern.

26

Measures 26-29 of 'Godzilla'. The music concludes with a final cadence.

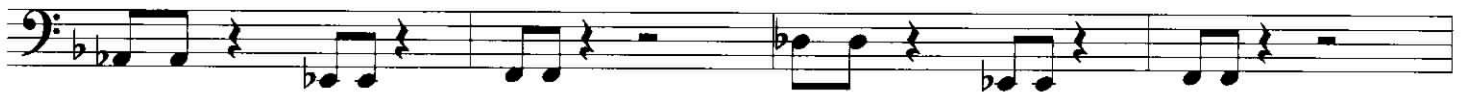
30 Apache

Measures 30-36 of 'Apache'. The music is in bass clef, 4/4 time, and B-flat major. It features a rhythmic pattern of eighth and sixteenth notes. A double bar line with a '2' above it indicates a repeat sign.

37

Measures 37-40 of 'Apache'. The music concludes with a final cadence.

124



128



133



Gonna Fly Now

136

3



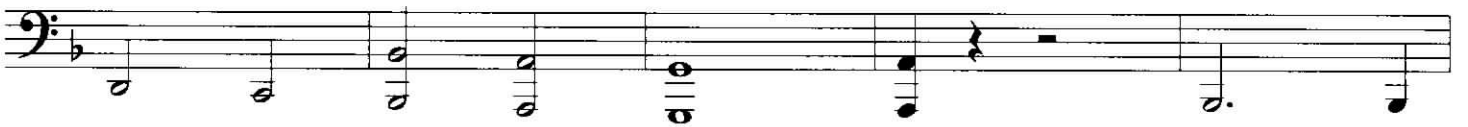
Eye of The Tiger

142

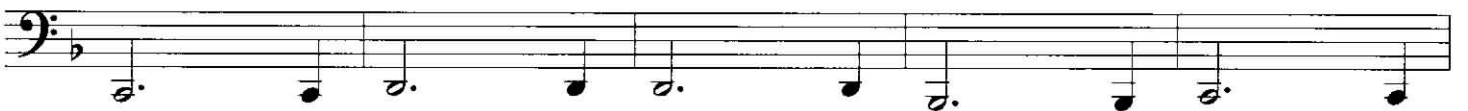


147

All I Do is Win



152



157



165



170 Chameleon



174



178



182



186

