

# Stand Tunes

## Back in Black

Musical notation for the first piece, 'Back in Black'. It consists of three staves of music in 4/4 time. The first staff starts with a measure rest for 4 measures, followed by a series of eighth and sixteenth notes. The second staff begins at measure 8 and features a more complex rhythmic pattern with eighth and sixteenth notes. The third staff begins at measure 11 and continues the melodic line with eighth notes and rests.

4

8

11

## Godzilla

Musical notation for the second piece, 'Godzilla'. It consists of two staves of music in 4/4 time. The first staff starts with a measure rest for 6 measures, followed by a series of eighth notes. The second staff begins at measure 23 and features a complex rhythmic pattern with eighth and sixteenth notes.

14

6

23

## Apache

Musical notation for the third piece, 'Apache'. It consists of three staves of music in 4/4 time. The first staff starts with a measure rest for 30 measures, followed by a series of eighth notes. The second staff begins at measure 35 and continues the melodic line with eighth notes and rests. The third staff begins at measure 43 and features a complex rhythmic pattern with eighth and sixteenth notes.

30

35

43

Stand Tunes

2

50 Hey Baby! 11

Musical notation for 'Hey Baby!' starting at measure 50. It features a treble clef, a whole rest, and a melodic line with a triplet of eighth notes.

64

Musical notation for 'Hey Baby!' continuing from measure 64. It features a treble clef and a melodic line with eighth notes.

68 Don't Stop Believin'

Musical notation for 'Don't Stop Believin'' starting at measure 68. It features a treble clef and a steady melodic line of quarter notes.

72

Musical notation for 'Don't Stop Believin'' continuing from measure 72. It features a treble clef and a melodic line with eighth notes and rests.

76

Musical notation for 'Don't Stop Believin'' continuing from measure 76. It features a treble clef and a melodic line with eighth notes and a long note.

81 Final Countdown

Musical notation for 'Final Countdown' starting at measure 81. It features a treble clef and a melodic line with eighth notes and rests.

87

Musical notation for 'Final Countdown' continuing from measure 87. It features a treble clef, a key signature change to B-flat major, and a melodic line with eighth notes.

91 Party Rock

Musical notation for 'Party Rock' starting at measure 91. It features a treble clef, a key signature change to B-flat major, and a rhythmic melodic line with eighth notes.

95

Musical notation for 'Party Rock' continuing from measure 95. It features a treble clef, a key signature change to B-flat major, and a rhythmic melodic line with eighth notes.

99

Musical staff for measure 99, featuring a sequence of eighth and sixteenth notes in a B-flat major key signature.

103 The Horse

Musical staff for measure 103, titled "The Horse", featuring a sequence of eighth and sixteenth notes in a B-flat major key signature.

107

Musical staff for measure 107, featuring a sequence of eighth and sixteenth notes in a B-flat major key signature.

114

Musical staff for measure 114, featuring a sequence of eighth and sixteenth notes in a B-flat major key signature.

119 Crazy Train

8

Musical staff for measure 119, titled "Crazy Train", featuring a sequence of eighth and sixteenth notes in a B major key signature. A large number "8" is written above the staff.

130

Musical staff for measure 130, featuring a sequence of eighth and sixteenth notes in a B major key signature.

133

Musical staff for measure 133, featuring a sequence of eighth and sixteenth notes in a B major key signature.

136 Gonna Fly Now

Musical staff for measure 136, titled "Gonna Fly Now", featuring a sequence of eighth and sixteenth notes in a B major key signature.

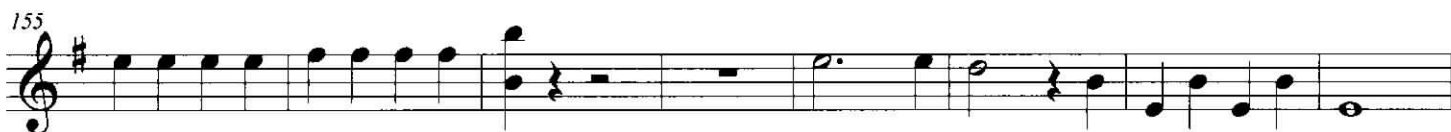
139

Musical staff for measure 139, featuring a sequence of eighth and sixteenth notes in a B major key signature.

## Eye of the Tiger



## All I Do Is Win



## Chameleon

